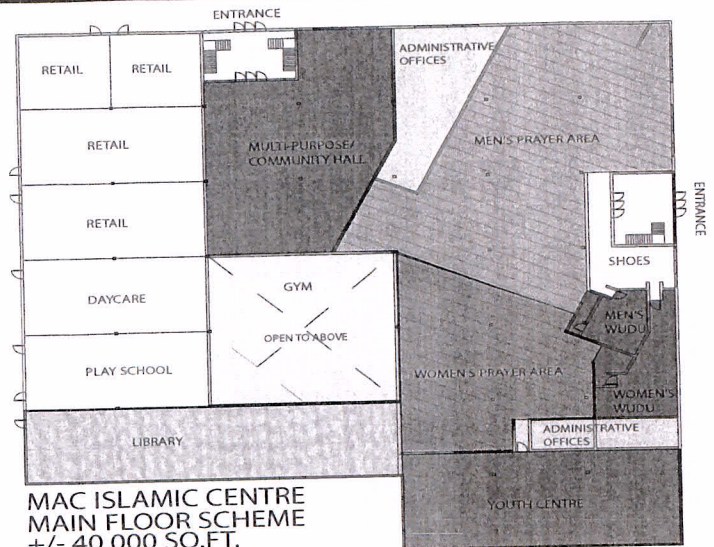


MAC ISLAMIC CENTRE SITE PLAN

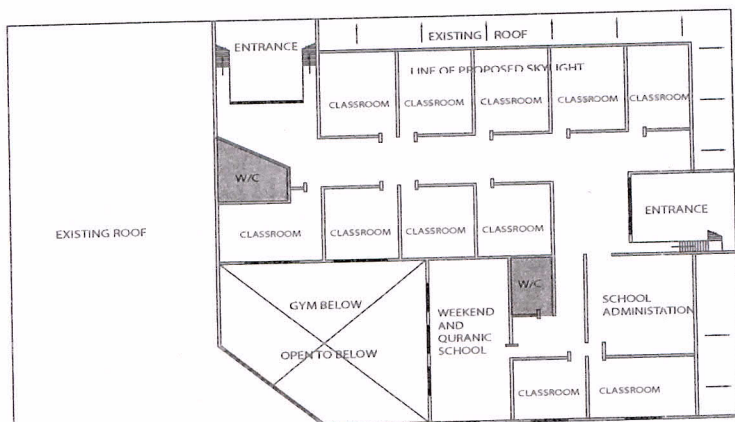


SITE AREA +/- 3.24 ACRES
MAIN FLOOR +/- 40,000 SQ.FT.
2ND FLOOR +/- 14,000 SQ.FT.



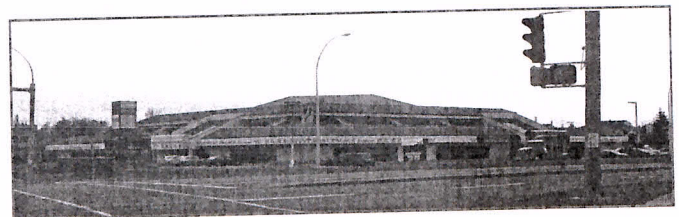
MAC ISLAMIC CENTRE MAIN FLOOR SCHEME +/- 40,000 SQ.FT.

PRAYER AREA +/- 11000 SQ.FT.
YOUTH CENTRE +/- 3700 SQ.FT.
LIBRARY +/- 3500 SQ.FT.
MULTI-PURPOSE/COMMUNITY HALL +/- 4200 SQ.FT.
GYM +/- 3800 SQ.FT.
WUDU +/- 1500 SQ.FT.
ADMINISTRATIVE +/- 2250 SQ.FT.
RETAIL +/- 5500 SQ.FT.
DAYCARE/PLAY SCHOOL +/- 3600 SQ.FT.



PROPOSED ISLAMIC SCHOOL GRADES K-9

**MAC ISLAMIC CENTRE
2ND FLOOR SCHEME**
SCHOOL AREA +/- 14000 SQ.FT.



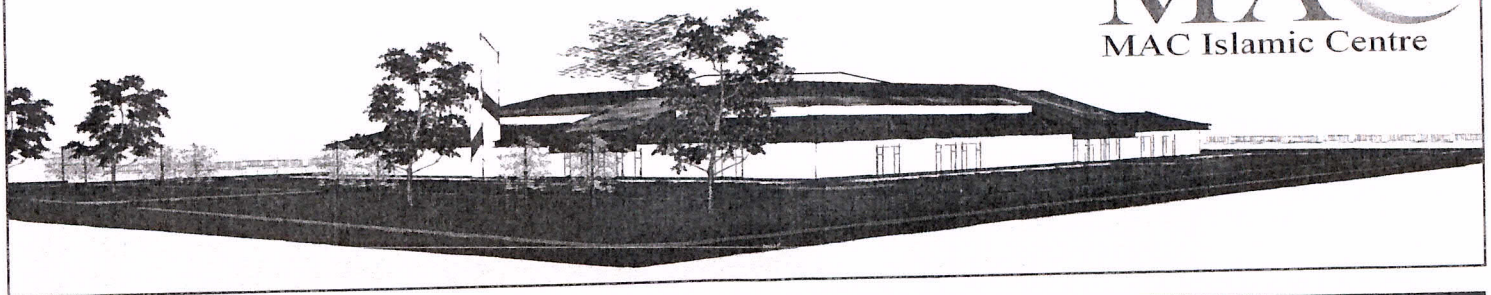
Location

- Callingwood Road connects to 170 Street to the east which then bisects the Whitemud Freeway just to the north passing by West Edmonton Mall and connecting further north to Stony Plain Road and Mayfield Road.
- To the west, Callingwood Road bisects 178 Street (Lessard Road) and extends to Anthony Henday Drive a short distance to the west.
- Although the property is not bordered directly by a major arterial, access to regional link roadways provides surprisingly quick access to all areas of Edmonton.

**WE NEED EVERYBODY'S HELP
WE ARE IN THE FINAL STAGES OF
CLOSING ON THIS PROJECT**

Opening Soon Inshalla with your help & support

MAC
MAC Islamic Centre



MAC ISLAMIC CENTRE

FOR PLEDGE SUPPORT PLEASE CONTACT US : OFFICE (780) 443-3200 FAX (780) 443-7774
 Cell: (780) 299-2320 director@macentre.ca

design office of ciTy inTerviewed
architectural design studio

MAIN FLOOR SUITE
10000 Jasper Avenue
Suite 1000
Edmonton, AB, Canada
T5J 3G6
780-443-3393
contact@cityinterviewed.com